



Guess the habitat: Wildlife extension

Use these wildlife cards as an extension to **Guess the habitat** - can learners match these animals to which habitat(s) they may be found in?

Use these questions to prompt further discussion and enquiry:

- What do these creatures do in their habitat? (e.g. *rest, eat, hide, have young/lay eggs*)
- Which habitat supports the most creatures? Why do you think this habitat has the most creatures in it?
- Which creatures can live in more than one habitat?
- Which creatures have you spotted in our grounds?
- Can you pair a creature with one it eats?

What would happen if...

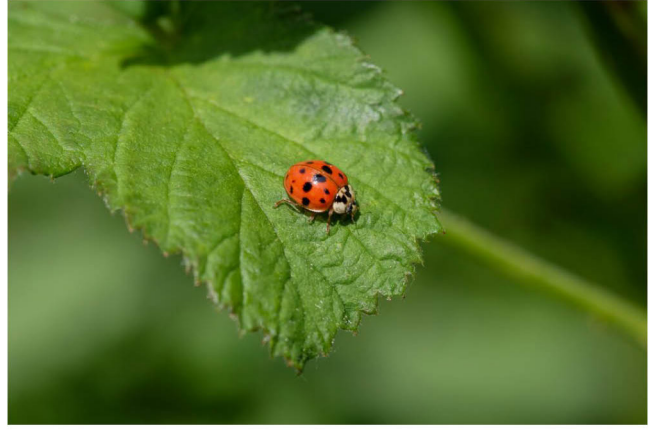
- ...there weren't any flowers?
 - ...the wet place dried up?
 - ...there weren't any trees?
 - ...we grew plants up the wall / fence?
-
- Why would the birds like trees or hedges as a habitat?
 - Why would the frog, newt and toad like the wet place?
 - Why would *[name of creature]* like *[name of habitat]*?
 - How could we make this habitat more wildlife-friendly?



Spider



© RHS, RHS / Georgi Mabee



Ladybird



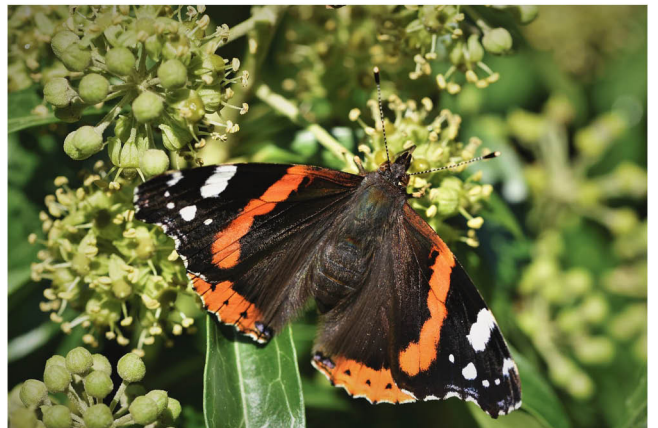
Worm



Hedgehog



Fox



Butterfly



© RHS, RHS / Georgi Mabee



House sparrow



Blackbird



Robin



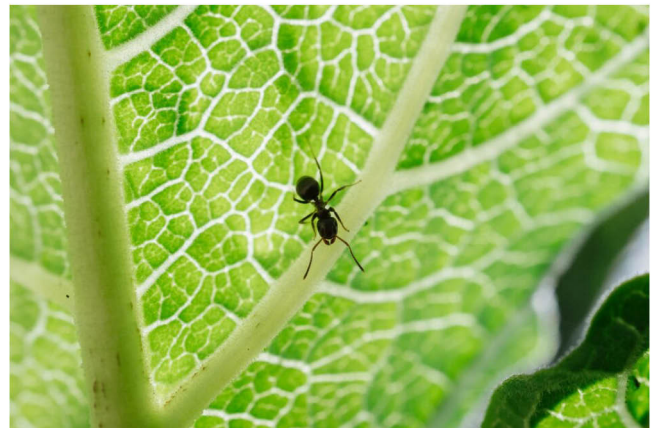
Frog



Field mouse



© RHS, RHS / Georgi Mabee



Ant



Snail



Rabbit



© RHS, RHS / Georgi Mabee



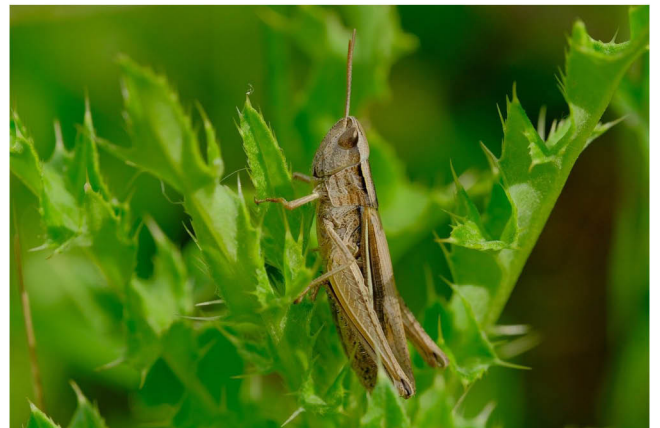
Wasp



Squirrel



Dragonfly



Grasshopper



Blue tit



Pigeon



Centipede



© RHS, RHS / Georgi Mabee



Slug



© RHS, RHS / Georgi Mabee



Woodlouse



© RHS, RHS / Georgi Mabee



Newt



Magpie



Crow



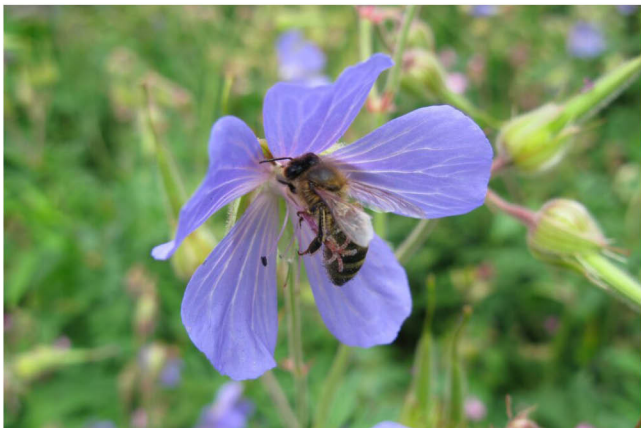
Bumblebee



Earwig



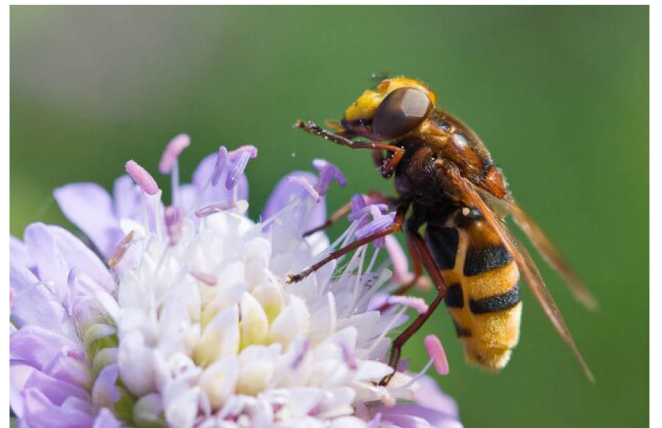
© RHS, RHS / Andrew Halstead



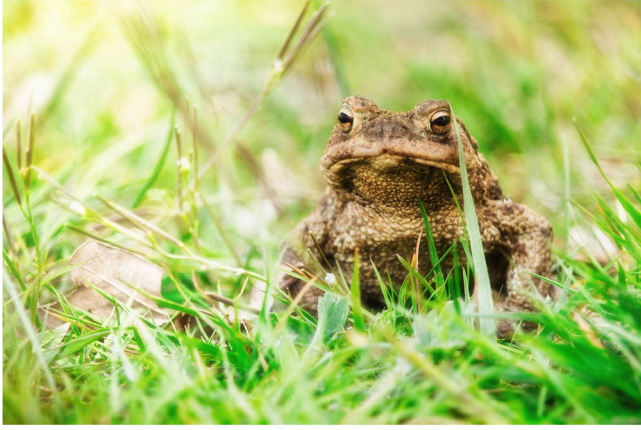
Honeybee



© RHS, RHS / Carol Sheppard



Hoverfly



Toad



Owl



Caterpillar



Greenfly